

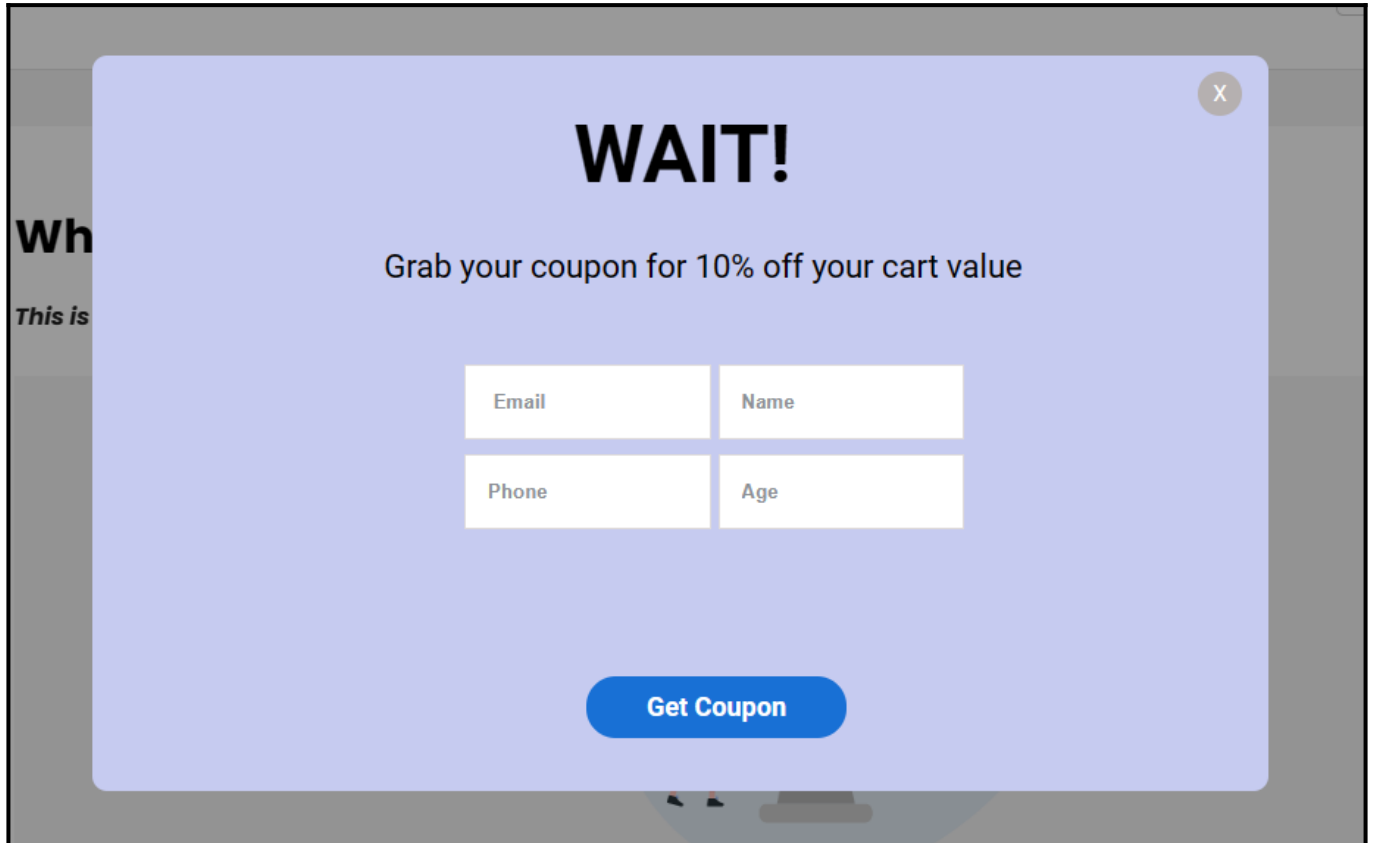
How to Create an Overlay With Input Fields in the Overlay Editor

Picreel lets you add multiple input fields to a website overlay with just a few clicks.

Benefits of adding several input fields:

1. **Collect** more data in a single go
2. **Enhance** your marketing campaigns by using the collected data as per the requirements

Here's what a website overlay with multiple input fields will look like:



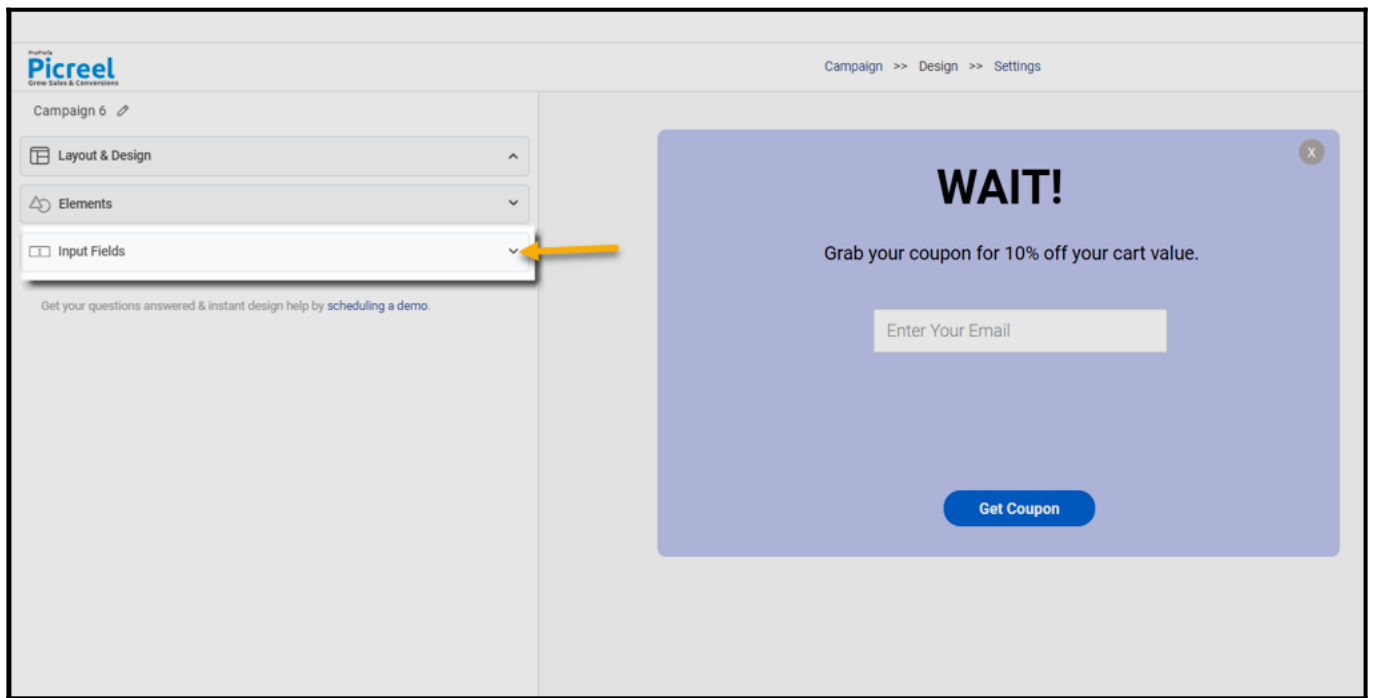
To create a website overlay with several input fields:

Step 1: Select Campaign

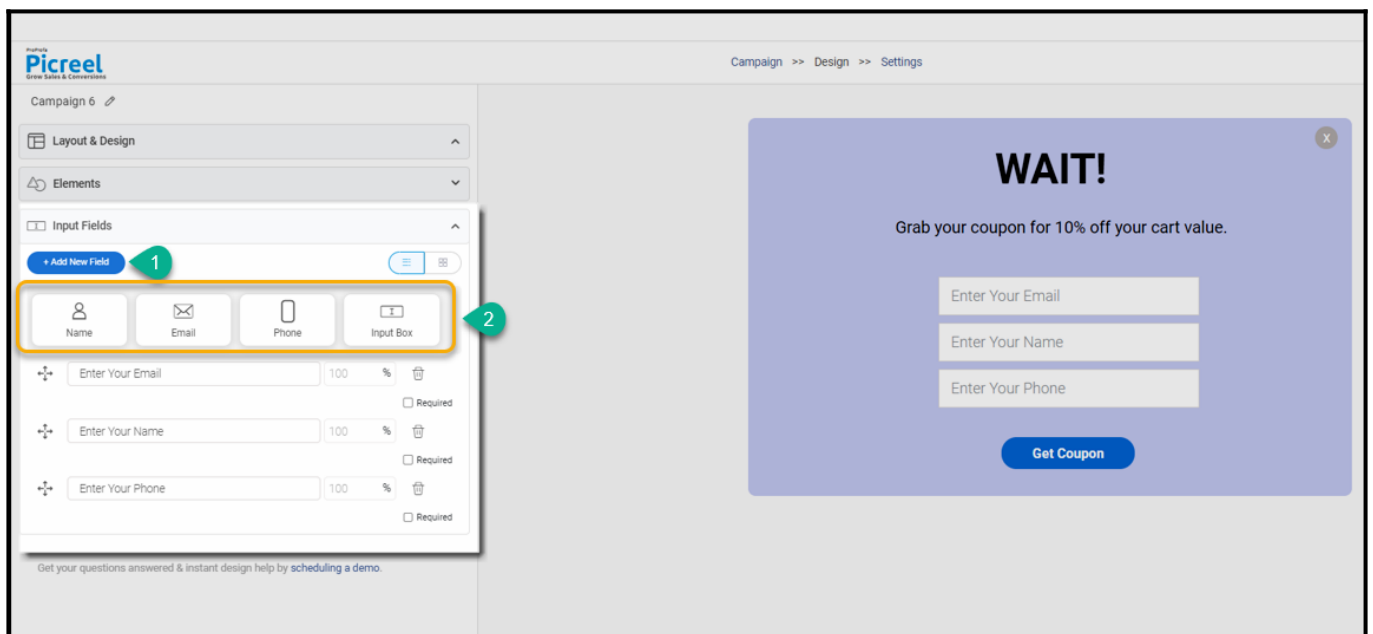
- Go to **Campaigns** and select a campaign to edit. Or create a new campaign from scratch or use a template.

Step 2: Add Input Fields

- In the Picreel Campaign Builder, click **Input Fields** on the left pane to expand the menu.



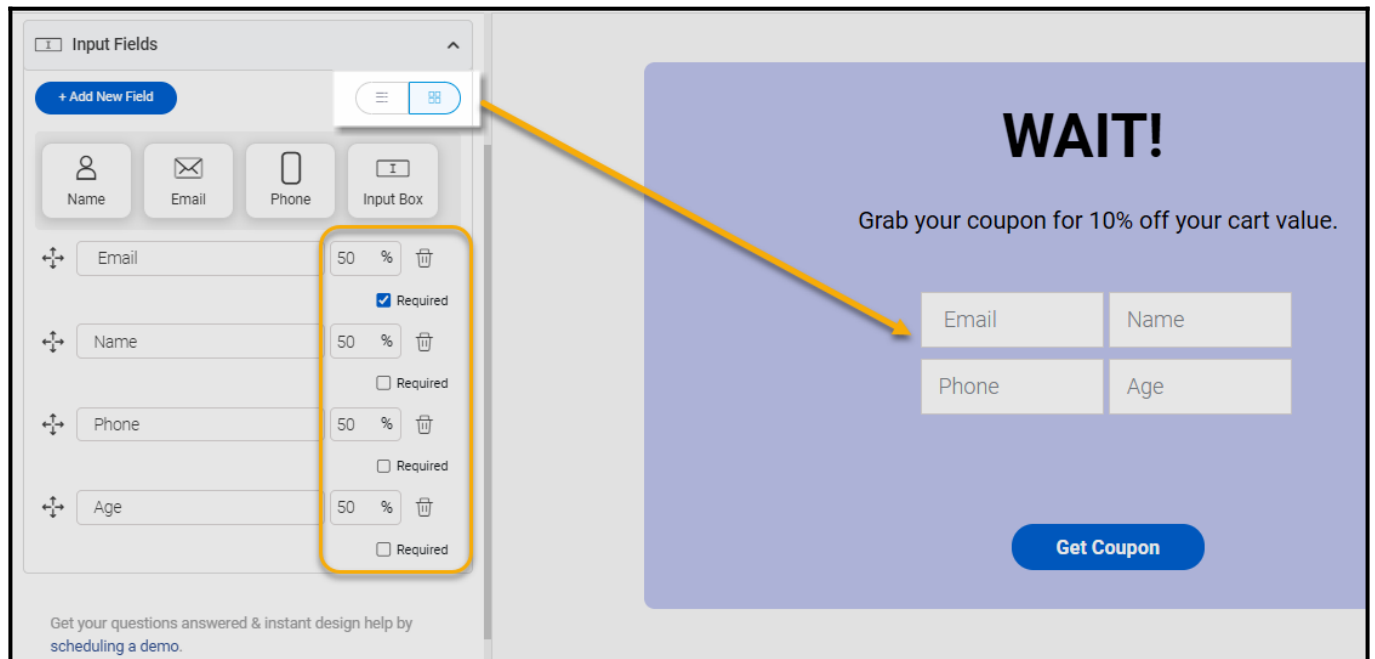
- Click **Add New Field** and select the input fields to add to the overlay. You can choose from the given fields to add a custom field to gather additional data from your website visitors.



Step 3: Customize Fields

- You can edit the placeholder text.
- You can mark the fields as required to ensure you generate authentic leads from your campaign.
- You can rearrange the fields using the drag-and-drop method.

- You can remove any field using the delete icon.
- You can toggle between list and grid view.



Proceed to set up the targeting of your campaign. Once done, save and activate.

And that's it! If you encounter any issues or have any questions, don't hesitate to reach out to our support team.

Related Articles:

- [How to Create a 'One-Button' & 'Two-Button' Overlays in Picreel](#)
- [How to Use Overlays for Retargeting & Boosting Conversions](#)
- [How to Integrate Picreel With Shopify](#)